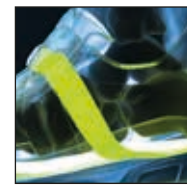


# CONNEXIS® GO GTX Ws

mid / silver-snow  
Art. No. 360009

Microfibre/textile, waterproof and extremely breathable with GORE-TEX®,  
shaft height 12 cm, sole 030

**Available sizes UK 3 – 9**



CONNEXIS® System



## Upper Material

Highly breathable textile/microfiber material.

## Inner lining

GORE-TEX®: waterproof and highly breathable. No water can penetrate and sweat evaporates in the form of water vapour. Abrasion-resistant inner lining with maximum climate comfort.

## Insert

Comfortable, damping and moisture wicking. Separate heel cup ensures good foot guidance. „Perfect-Fit“ marking for optimal check of the correct shoe size. Washable at 30 °C.

## HAIX® Absorption

Damping with damping wedge integrated into the sole. The Energy Return PU midsole absorbs and releases energy back to the wearer with every step.

## Durable sole

Rubber compound for long durability.

## Sole

Extremely high slip resistance with low wear due to special rubber and innovative sole construction. Slats and specially bevelled sole elements ensure optimum grip as well as high agility and stability on slippery and wet surfaces. A lightweight PU cushioning wedge provides excellent running characteristics. Very good insulation against cold, fuel-resistant and non-marking.

## HAIX® CONNEXIS® System

By pulling on the fascia tape, the fasciae in the sole of the foot are lightly stimulated to reduce negative effects on the musculoskeletal system and maintain performance. Anatomical last supports the natural function of the feet. The insole has nubs with a structure and function similar to a fascia ball, which stimulate the plantar fascia while walking.

## HAIX® Anti Slip

Very good adhesion on different terrain due to the profile design and the special rubber used.

## HAIX® Smart Lacing System

Smooth and pressure-free adjustment of the boot to the foot, quick lock and lace pocket.

## Other

Lightweight, metal-free, soft shaft end for comfortable slipping in and out; GORE® Stretch strap construction allows the shoe to adapt individually to the foot in the instep area; synthetic back cap for stability in the heel area.

|    |    |    |    |    |    |    |    |    |    |    |    |    |    |     |    |     |    |     |    |     |    |     |    |     |    |
|----|----|----|----|----|----|----|----|----|----|----|----|----|----|-----|----|-----|----|-----|----|-----|----|-----|----|-----|----|
| UK | 3  | 3½ | 4  | 4½ | 5  | 5½ | 6  | 6½ | 7  | 7½ | 8  | 8½ | 9  | 9½  | 10 | 10½ | 11 | 11½ | 12 | 12½ | 13 | 13½ | 14 | 14½ | 15 |
| EU | 35 | 36 | 37 | 37 | 38 | 39 | 39 | 40 | 41 | 41 | 42 | 43 | 43 | 44  | 45 | 45  | 46 | 47  | 47 | 48  | 48 | 49  | 50 | 50  | 51 |
| US | 4  | 4½ | 5  | 5½ | 6  | 6½ | 7  | 7½ | 8  | 8½ | 9  | 9½ | 10 | 10½ | 11 | 11½ | 12 | 12½ | 13 | 13½ | 14 | 14½ | 15 | 15½ | 16 |

## HAIX®-Schuhe, Produktions- und Vertriebs GmbH

Auhofstrasse 10, 84048 Mainburg, Germany  
T. +49(0)8751/8625-0, F. +49(0)8751/8625-25  
info@haix.de, www.haix.com