

TREKKER PRO 2.0

Art. No. 602017



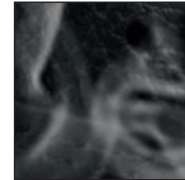
CE EN ISO 20345:2011 S3 HRO HI CI WR SRC

Leather thickness 2.5 – 2.7 mm, waterproof and breathable with GORE-TEX® Performance, leg height 17,5 cm, antistatic, sole 020

Available sizes UK 3 ½ – 12, Extra large sizes UK 13 / 14 / 15



602017



HAIX® Climate System



RTC with countersunk seams



Upper Material

Waterproof leather, hydrophobic, breathable (5,0 mg/cm²/h), 2.5 – 2.7 mm thick

Inner lining

GORE-TEX® Performance; waterproof and breathable. Highly abrasion-resistant lining with fleece midlayer. Optimized-climate comfort for all year seasons and excessive use. Increased chemical protection.

Plastic Insole

dimensionally stable, torsion-proof, avoids punctual pressure (e.g. of stones).

Foot bed

Anatomically formed, exchangeable, washable, very good moisture absorption, dries quickly.

HAIX® Protective steel toe cap

Anatomically formed protective steel toe cap meets the highest safety requirements.

Protective Throughsole

Flexible, lightweight and puncture resistant metal midsole.

Sole

Rubber/PU walking sole with proven street/ terrain tread, wear resistant and non-slip traction; large, bevelled contact surface and superior bending comfort. Excellent cold/heat insulation, fuel resistant and non-marking characteristics. Compliant with EN ISO 20345:2011.

HAIX® Climate System

The HAIX Climate system uses the pumping movement, which permits air circulation with every step – warm air is released and fresh air comes in through the vent holes at the top of the boot.

Sun Reflect

Reduces the heating effect of the upper leather by direct sunlight. Sunlight is reflected by the leather, keeping the leather and the feet cooler.

HAIX® CO System

Pressure relief, cushioning, correction of foot position correct posture and muscular balance.

Others

Integrated heel bend, lacing system with eyelets permitting smooth movement, clamps, rubber toe cap, pulling strap

| | | | | | | | | | | | | | | | | | | | | | | | | | |
|----|----|----|----|----|----|----|----|----|----|----|----|----|----|-----|----|-----|----|-----|----|-----|----|-----|----|-----|----|
| UK | 3 | 3½ | 4 | 4½ | 5 | 5½ | 6 | 6½ | 7 | 7½ | 8 | 8½ | 9 | 9½ | 10 | 10½ | 11 | 11½ | 12 | 12½ | 13 | 13½ | 14 | 14½ | 15 |
| EU | 35 | 36 | 37 | 37 | 38 | 39 | 39 | 40 | 41 | 41 | 42 | 43 | 43 | 44 | 45 | 45 | 46 | 47 | 47 | 48 | 48 | 49 | 50 | 50 | 51 |
| US | 4 | 4½ | 5 | 5½ | 6 | 6½ | 7 | 7½ | 8 | 8½ | 9 | 9½ | 10 | 10½ | 11 | 11½ | 12 | 12½ | 13 | 13½ | 14 | 14½ | 15 | 15½ | 16 |

HAIX®-Schuhe, Produktions- und Vertriebs GmbH

Auhofstrasse 10, 84048 Mainburg, Germany
T. +49(0)8751/8625-0, F. +49(0)8751/8625-25
info@haix.de, www.haix.com