

RANGER GSG9-S

Art. No. 203101



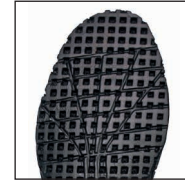
CE EN 20347:2012 O3 HRO HI CI WR FO SRC

Leather thickness 1.8 – 2.0 mm, waterproof, breathable, bacteria and chemical resistant with CROSSTECH®, leg height 18.5 cm, antistatic, sole 05

Available in UK sizes 3 – 12, Extra large sizes 12 ½ – 15



203101



Inlay with excellent shock absorption and moisture transportation properties



The inside of the shoes is made from very abrasion-resistant leather – no seams in the lacing area; ideally suited for “fast roping”



Upper Material

Waterproof Leather, hydrophobic, breathable (5,0 mg/cm²/h), 1.8 – 2.0 mm thick

Inner lining

CROSSTECH® Laminat Technology; 3-layer CROSSTECH® laminate, watertight and breathable. Abrasion-resistant lining with optimized climate comfort for all seasons, espec. For flexible alternating inside and outside use. Superior penetration resistance against blood and body fluids (protection against blood borne bacteria and virus). Increased chemical protection.

Foot bed

Anatomically formed, exchangeable, washable, very good moisture absorption, dries quickly.

Protective throughsole

Flexible, non-metallic protective throughsole.

Sole

Rubber/PU sole with a street/terrain tread, wear resistant and non-slip traction.

Optimal step and bend behaviour due to sporty toe and heel rounding. This rubber shell sole features the MSL (micro-soft-light) system that is the result of an additional production process to achieve extremely low weight, excellent cold/heat insulation and non-marking characteristics. Compliant with EN ISO 20347:2012

HAIX® Climate System

The HAIX® Climate system uses the pumping movement, which permits air circulation with every step – warm air is released and fresh air comes in through the vent holes at the top of the boot.

HAIX® MSL System

MicroSoftLight: Improved damping, extremely low weight due to the PU foam across the entire sole area, good cold/heat insulation

Sun Reflect

Reduces the heating effect of the upper leather by direct sunlight. Sunlight is reflected by the leather, keeping the leather and the feet cooler.

HAIX® 2-Zone Lacing

Two Zone Lacing System enables a separate adjustment of the boot to the foot and leg area.

Others

Ideally suited for „Fast Roping“ with closed lacing system, two-zone lacing, metal-free

UK	3	3 ½	4	4 ½	5	5 ½	6	6 ½	7	7 ½	8	8 ½	9	9 ½	10	10 ½	11	11 ½	12	12 ½	13	13 ½	14	14 ½	15
EU	35	36	37	37	38	39	39	40	41	41	42	43	43	44	45	45	46	47	47	48	48	49	50	50	51
US	4	4 ½	5	5 ½	6	6 ½	7	7 ½	8	8 ½	9	9 ½	10	10 ½	11	11 ½	12	12 ½	13	13 ½	14	14 ½	15	15 ½	16

HAIX®-Schuhe, Produktions- und Vertriebs GmbH

Auhofstrasse 10, 84048 Mainburg, Germany
T. +49(0)8751/8625-0, F. +49(0)8751/8625-25
info@haix.de, www.haix.com